

**SUNY PROJECT
No. G06098
BOOKS & BYTES
CAFE RENOVATION
MILNE LIBRARY**

**SUNY Geneseo
Campus Auxillary
Services**

1 College Circle
Geneseo, NY 14454



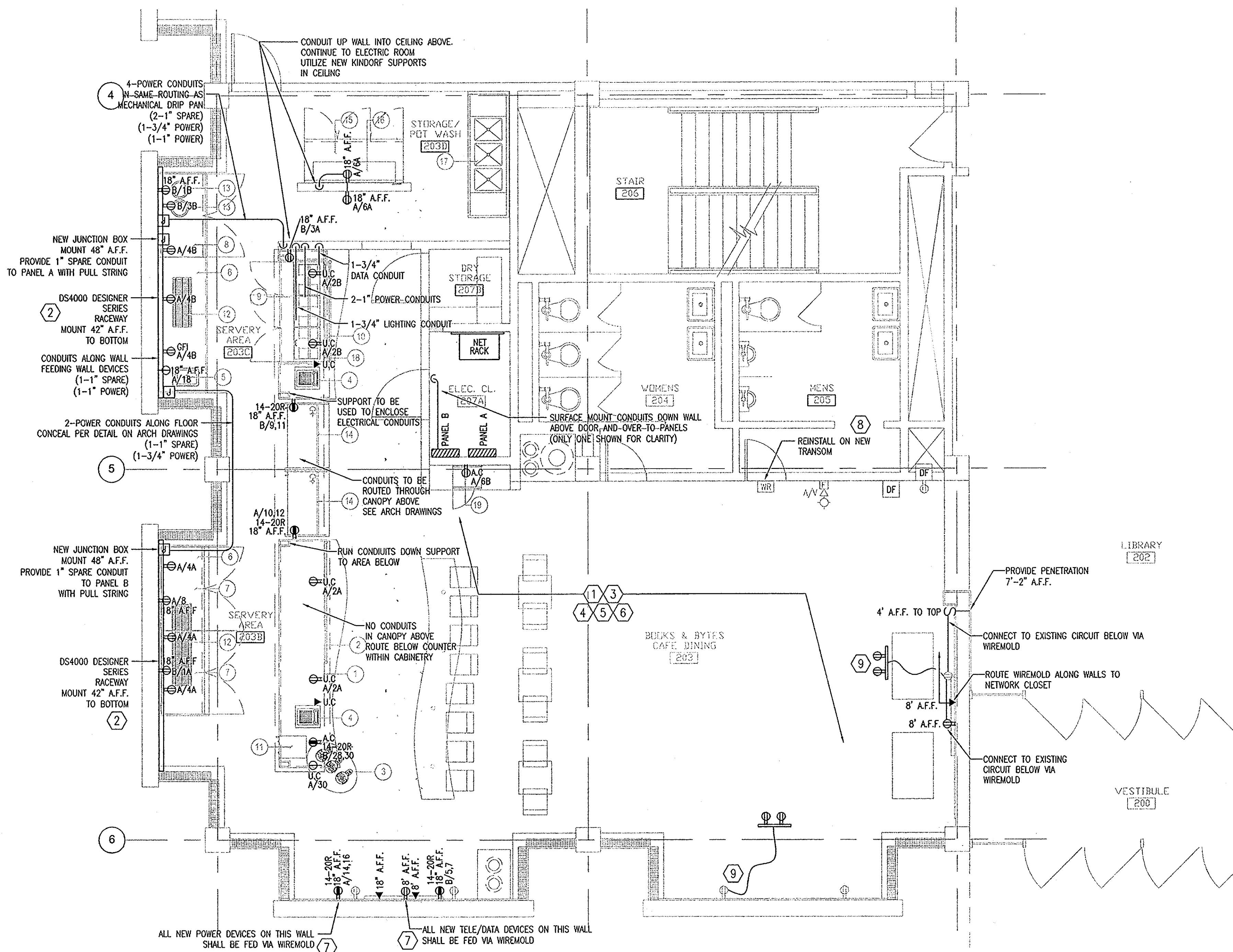
www.bergmannpc.com

28 East Main Street
200 First Federal Plaza
Rochester, New York 14614
585.232.5135 / 585.232.4652 fax

Engineers / Architects / Planners / Surveyors

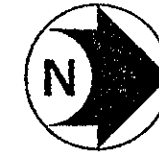
REVISIONS				
NO.	DATE	DESCRIPTION	REV.	OK'D

NOTE:
Unauthorized alteration or addition to this drawing is a violation of the New York State Education Law Article 145, Section 7209.



INSTALLATION PLAN

SCALE: 1/4" = 1'-0"



ELECTRICAL GENERAL NOTES

- ELECTRICAL CONTRACTOR, IF NOT LICENSED TO HANDLE ASBESTOS PER 12NYCRR RULE 56, SHALL COORDINATE WITH LICENSED ABATEMENT CONTRACTOR.
- CIRCUITING SHOWN IS DIAGNOSTIC AND BASED ON PANEL SCHEDULE. CIRCUITING MAY BE CHANGED BUT SHALL KEEP THE SAME CIRCUIT LOADING SCHEMES. CONTRACTOR SHALL VERIFY THAT EXISTING CIRCUITS ARE SIZED APPROPRIATELY FOR THE NEW LIGHTING LOADS PER NEC 220.43(B). PROVIDE ADDITIONAL CIRCUITS AS REQUIRED.

INSTALLATION KEYNOTES

- PROVIDE RECEPTACLES WITH CONDUIT, WIRING AND CIRCUIT BREAKERS. REFER TO EQUIPMENT SCHEDULE ON THIS DRAWING.
- PROVIDE DESIGNER SERIES SURFACE RACEWAY (4000 SERIES WIREMOLD DS4000) WITH DOWNWARD FACING RECEPTACLES. RACEWAY SHALL EXTEND BETWEEN EACH MULLION. COLOR: DESIGNER IVORY. ALL OTHER SURFACE MOUNTED RACEWAY SHALL BE WIREMOLD SERIES 400, 800, OR 2300 TYPE SIZED PER WIRE FULL REQUIREMENTS. COLOR: WHITE.
- FOR SERVARY RECEPTACLES INSTALL CONDUIT WITHIN CANOPY AS SHOWN ON DETAIL ON DRAWING A403. RUN CONDUIT WITHIN CANOPY SUPPORTS FOR DEVICES NEAR THE FLOOR.
- CONCEAL CONDUIT BEHIND COUNTER WHERE APPLICABLE.
- FOR RECEPTACLES NOT MOUNTED IN WIREMOLD AND ARE ABOVE THE COUNTER MOUNT THEM HORIZONTALLY.
- PROVIDE TELE/DATA BACKBOXES WITH 3/4" EMT CONDUIT TO NETWORK RACK. ROUTE CONDUIT ALONG POWER CONDUITS. PROVIDE PULL STRING.
- PROVIDE CONDUIT, WIRING AND CIRCUIT BREAKERS TO DEVICES ON WALL. ALL VERTICLE AND CEILING RACEWAY SHALL BE SURFACE WIREMOLD. HORIZONTAL RACEWAY SHALL BE EMT CONDUIT. PROVIDE BACKBOX AND PULL STRING FOR TELE/DATA DROP.
- DISCONNECT AND REMOVE WIRELESS ROUTER. REINSTALL ON NEW TRANSOM.
- PROVIDE 2' SECTION OF WIREMOLD WITH 2 DUPLEX RECEPTACLES. SURFACE MOUNT AT CENTER OF BANQUET CHAIRS. PROVIDE 6' SECTION OF MC CABLE AND HARDWARE INTO EXISTING RECEPTACLE. SEE DETAIL #3 ON DRAWING A403.

ITEM #	DESCRIPTION	VOLTAGE	PHASE	AMPS	CONNECTION	MOCP SIZE	FEEDER	PANEL/CIRCUIT #	RECEPT.S BY EC.	NOTES
1	BAKERY COUNTER	120	1	2	RECEPTACLE	20A	2#12, 1#12GND, 3/4" C	A/2A	5-20R	COURTESY OUTLETS/MOUNT IN CABINET
4	CASH REGISTER (2)	120	1	2	RECEPTACLE	20A	2#12, 1#12GND, 3/4" C	A/2A AND A/2B	5-20R	CONNECT TO RECEPTACLE IN ITEM #1 AND #18
6	BACK PREP COUNTER (2)	120	1	12	RECEPTACLE	20A	2#12, 1#12GND, 3/4" C	A/4A AND A/4B	5-20R	COURTESY OUTLETS MOUNTED ON WALL 48" AFF
6	FUTURE OVEN RECS (2)	208	1	35	RECEPTACLE	N/A	1" C WITH PULL STRING	N/A	N/A	PROVIDE ONE SPARE CONDUIT TO EACH PANEL
7	UNDER COUNTER REFRIG. BASE (2)	120	1	7.2	RECEPTACLE	20A	2#12, 1#12GND, 3/4" C	A/8 AND B/1A	5-20R	DEDICATED REC MTD 18" AFF
8	UNDER COUNTER FREEZER BASE	120	1	12	RECEPTACLE	20A	2#12, 1#12GND, 3/4" C	B/1B	5-20R	DEDICATED REC MTD 18" AFF
9	REFRIGERATED SANDWICH UNIT	120	1	12	RECEPTACLE	20A	2#12, 1#12GND, 3/4" C	B/3A	5-20R	DEDICATED REC MTD 18" AFF
11	COFFEE POT BREWER	208	1	16	RECEPTACLE	20A	3#12, 1#12GND, 3/4" C	B/28, 30	14-20R	DEDICATED REC MTD ABOVE COUNTER
13	SOUP WARMERS (2)	120	1	5.4	RECEPTACLE	20A	2#12, 1#12GND, 3/4" C	B/3B	5-20R	ONE DED REC MTD 48" A.F.F. FOR BOTH
14	GRAB AND GO CASES (2)	208	1	13.7	RECEPTACLE	20A	3#12, 1#12GND, 3/4" C	A/10, 12 AND B/9, 11	14-20R	ONE DED REC MTD 18" A.F.F. FOR EACH
15	REFRIGERATED WORK COUNTER	120	1	12	RECEPTACLE	20A	2#12, 1#12GND, 3/4" C	A/6A	5-20R	DEDICATED REC MTD 48" A.F.F.
18	SANDWICH COUNTER	120	1	4	RECEPTACLE	20A	2#12, 1#12GND, 3/4" C	A/2B	5-20R	COURTESY OUTLETS/MOUNT IN CABINET
19	MICROWAVE OVEN	120	1	13.3	RECEPTACLE	20A	2#12, 1#12GND, 3/4" C	A/6B	5-20R	ONE DED REC MOUNTED ABOVE COUNTER
MECH	SUMP PUMPS (2)	120	1	9	RECEPTACLE	20A	2#12, 1#12GND, 3/4" C	A/18 AND A/30	5-20R	ONE DED SIMPLEX REC UNDER COUNTER FOR EACH

**ELECTRICAL
INSTALLATION
PLAN**



Project Manager:
R. NAPOLI
Designed by:
B. ELIASZ
Drawn by:
B. ELIASZ
Checked by:
C. SMEENK
Date Issued:
APRIL 18, 2009
Scale:
AS NOTED

Project Number: 8098.00
File Name:
Drawing Number:

E101