

**SUNY PROJECT
No. G06098
BOOKS & BYTES
CAFE RENOVATION
MILNE LIBRARY**

**SUNY Geneseo
Campus Auxillary
Services**

1 College Circle
Geneseo, NY 14454



www.bergmannpc.com

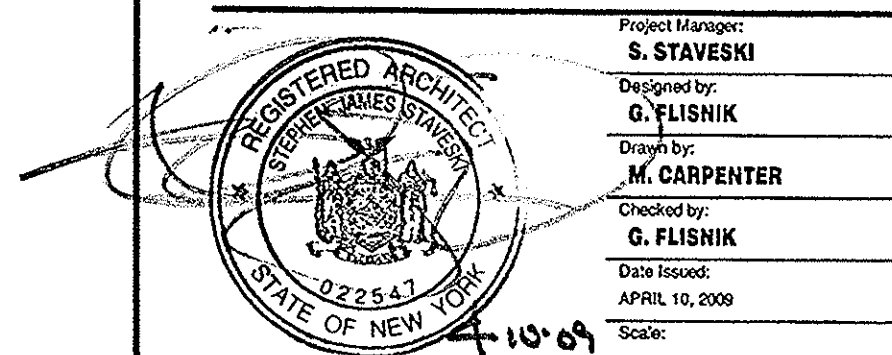
28 East Main Street
200 First Federal Plaza
Rochester, New York 14614
585.232.5135 / 585.232.4652 fax

Engineers / Architects / Planners / Surveyors

REVISIONS			
NO.	DATE	DESCRIPTION	REV. CK'D

NOTE:
Unauthorized alteration or addition to this drawing is a violation of the New York State Education Law Article 145, Section 7209.

**ASBESTOS ABATEMENT
CEILING PLAN**

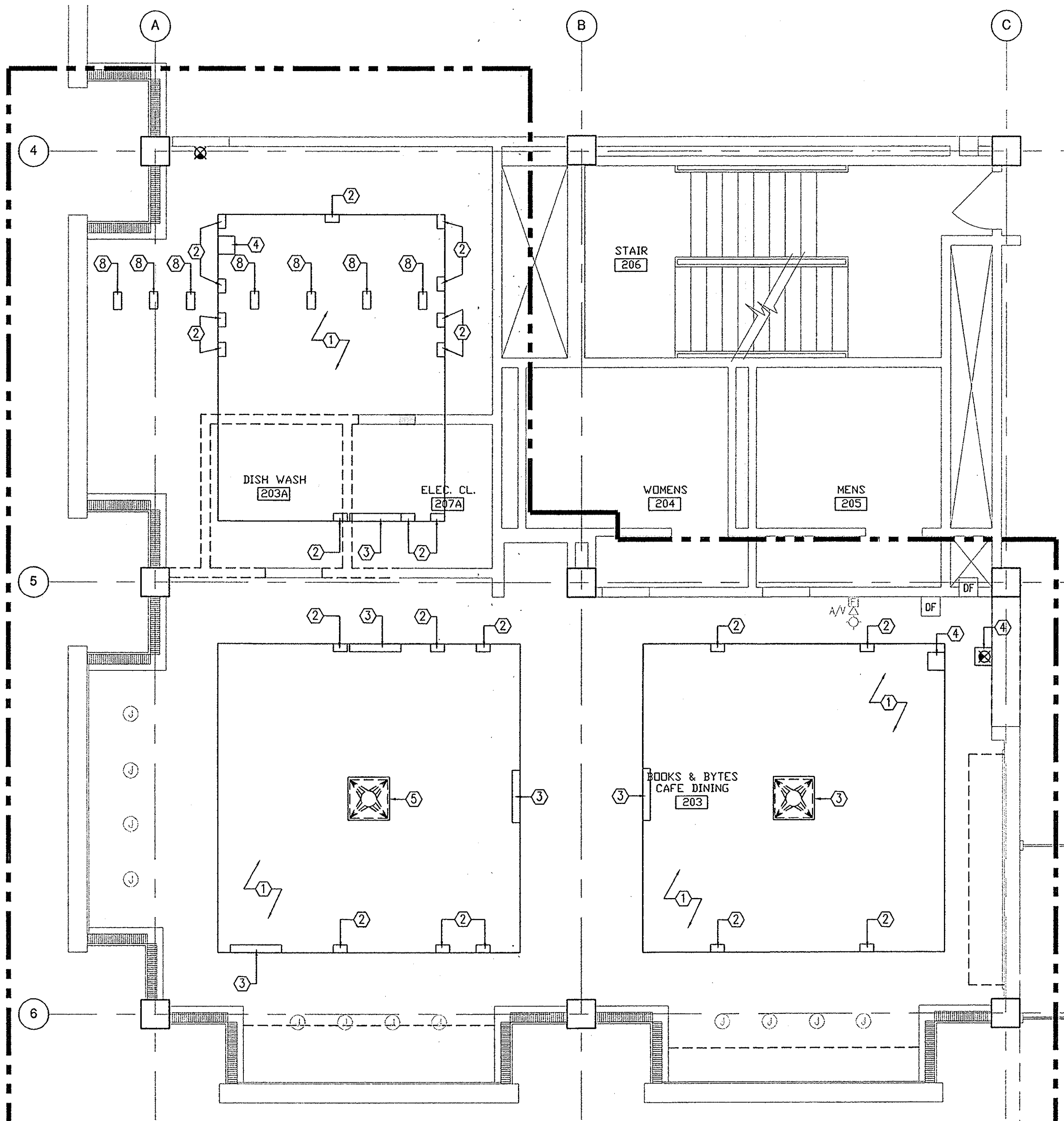


Project Manager: S. STAVESKI
Designed by: G. FLISNIK
Drawn by: M. CARPENTER
Checked by: G. FLISNIK
Date Issued: APRIL 10, 2009
Scale: AS NOTED

Project Number: 8058.00
Drawing Number: **ASB100**

- GENERAL ASBESTOS ABATEMENT NOTES:**
- THE ABATEMENT CONTRACTOR SHALL PERFORM ALL WORK IN STRICT ACCORDANCE WITH ALL APPLICABLE LOCAL, STATE AND FEDERAL RULES, REGULATIONS, GUIDELINES, VARIANCES AND THE CONTRACT DOCUMENTS.
 - THE ABATEMENT CONTRACTOR TO REFER TO ASBESTOS REMOVAL SPECIFICATION NUMBER 028213. NO WORK SHALL BE ALLOWED TO COMMENCE UNTIL ALL PRE-WORK SUBMITTALS HAVE BEEN APPROVED BY OWNER'S REPRESENTATIVE.
 - ALL ASBESTOS ABATEMENT PROCEDURES ARE TO BE IN ACCORDANCE WITH ALL STANDARDS AS SET FORTH BY CURRENT NYSOOL INDUSTRIAL CODE RULE #56 AND ALL OTHER APPLICABLE REGULATIONS.
 - AFTER FINAL REMOVALS HAVE BEEN COMPLETED, ANY DAMAGED EXISTING FINISHES SHALL BE RESTORED TO ORIGINAL CONDITIONS BY THE CONTRACTOR. ALL TEMPORARY PARTITIONS BY THE CONTRACTOR SHALL BE IN ACCORDANCE WITH CODE RULE #56 AND BE REMOVED AT THE COMPLETION OF THE ABATEMENT WORK. THE CONTRACTOR SHALL BE HELD RESPONSIBLE FOR ANY DAMAGE CAUSED TO ANY AREAS OF THE BUILDING AS A RESULT OF IMPROPER TEMPORARY PROTECTION.
 - THE ABATEMENT LOCATIONS ARE APPROXIMATE. THE ABATEMENT CONTRACTOR IS RESPONSIBLE FOR COORDINATING THE EXACT ABATEMENT LOCATIONS WITH THE MECHANICAL, ELECTRICAL AND PLUMBING CONTRACTORS PRIOR TO ABATEMENT. ABOVE FINISHED FLOOR ELEVATIONS TO BE DIRECTED BY MEP CONTRACTORS. REFER TO MEP DRAWINGS.
 - THE ABATEMENT CONTRACTOR ASSUMES ALL RESPONSIBILITY OF PROCEEDING IN SUCH A MANNER THAT HE/SHE OFFERS HIS EMPLOYEES A WORKPLACE FREE FROM RECOGNIZED HAZARDS CAUSING OR LIKELY TO CAUSE DEATH OR SERIOUS INJURY AND WILL BE RESPONSIBLE FOR SITE SAFETY AND SECURITY.
 - ALL PACM MUST BE COMPLETELY REMOVED DOWN TO THE SUBSTRATE THEY ARE AFFIXED TO.
 - THE OWNER'S REPRESENTATIVE SHALL PROCURE A NYSOOL CERTIFIED AIR TECHNICIAN TO PERFORM PROJECT AIR SAMPLING. THE ABATEMENT CONTRACTOR IS RESPONSIBLE FOR PERSONAL (EMPLOYEE) AIR MONITORING.
 - THE OWNER'S REPRESENTATIVE SHALL PROCURE A NYSOOL CERTIFIED PROJECT MONITOR WHO WILL HAVE THE AUTHORITY TO HALT ABATEMENT WORK IF NOT BEING CONDUCTED PER THE CONTRACT DOCUMENTS.
 - THE ABATEMENT CONTRACTOR IS RESPONSIBLE FOR ALL TOOLS, EQUIPMENT AND SUPPLIES. THE DIRECTOR'S REPRESENTATIVE WILL NOT BE LIABLE FOR THEFT OR DAMAGE. THE LOCATION OF ANY SITE STORAGE OF MATERIAL, EQUIPMENT AND WASTE TRAILER/DUMPSTER SHALL BE COORDINATED WITH AND APPROVED BY THE DIRECTOR'S REPRESENTATIVE.

- ASBESTOS ABATEMENT KEYNOTES:**
- REMOVE APPROXIMATELY 704 SF OF PACM CEILING TILES AND METAL TRACK.
 - REMOVE APPROXIMATELY 12 SF OF PACM SKIM COAT TO FACILITATE CONDUIT HANGER PENETRATIONS (22 EACH - 18"x14" LOCATIONS) ON VERTICAL FACE.
 - REMOVE APPROXIMATELY 4 SF OF PACM SKIM COAT TO FACILITATE CONDUIT PENETRATIONS (2 EACH - 10"x10" & 2 EACH - 10"x20" LOCATIONS) ON VERTICAL FACE.
 - REMOVE APPROXIMATELY 1 SF OF PACM SKIM COAT TO FACILITATE JUNCTION BOX AND EXIT SIGN MOUNTING (3 EACH - 4"x4" LOCATIONS).
 - REMOVE TWO EXISTING HVAC DIFFUSERS AND THE SURROUNDING PACM DUCT INSULATION (2 SF TOTAL) TO FACILITATE THE INSTALLATION OF NEW DIFFUSERS WITHOUT IMPACTING THE REMAINING PACM DUCT INSULATION.
 - REMOVE APPROXIMATELY 200 SF OF PACM 9"x9" FLOOR TILE AND ASSOCIATED PACM MASTIC.
 - REMOVE APPROXIMATELY 800 SF OF PACM CARPET AND ASSOCIATED PACM MASTIC.
 - REMOVE APPROXIMATELY 4 SF OF PACM SKIM COAT TO FACILITATE PIPE HANGER PENETRATION (7 - 12"x4" LOCATIONS).
 - REMOVE APPROXIMATELY 5 SF OF PACM JOINT COMPOUND AND ASSOCIATED PACM GYP-BOARD TO FACILITATE THE MOUNTING OF PIPING TO VERTICAL WALLS (2 EACH - 4"x4" & 2 EACH - 2" WALL PENETRATIONS).
 - REMOVE APPROXIMATELY 300 SF OF PACM GYP-BOARD AND ASSOCIATED PACM JOINT COMPOUND.
 - REMOVE APPROXIMATELY 3 SF OF PACM GYP-BOARD AND ASSOCIATED PACM JOINT COMPOUND (34 - 4"x4" LOCATIONS FOR WALL-MOUNT LOCATIONS).
 - REMOVE APPROXIMATELY 2 SF OF PACM JOINT COMPOUND AND ASSOCIATED PACM GYP-BOARD TO FACILITATE TV MOUNTS (2 EACH - 12"x12" LOCATIONS).
- ALL MATERIALS TO BE ABATED ARE PRESUMED ASBESTOS CONTAINING MATERIALS (PACM).
- ALL QUANTITIES ARE ESTIMATED TO BE ADEQUATE TO FACILITATE HANGER & DEVICE INSTALLATIONS.
- KEYNOTES 1, 2, 3, 4, 5, & 8 APPLY TO DRAWING ASB100.
- KEYNOTES 6, 7, 9, 10, 11, & 12 APPLY TO DRAWING ASB101.



REFLECTED CEILING PLAN

SCALE: 1/4" = 1'-0"

