

Department of Human Resources Office Renovation

RIT

George Eastman Building
Fifth Floor
8 Lomb Memorial Dr.
Rochester, NY 14623

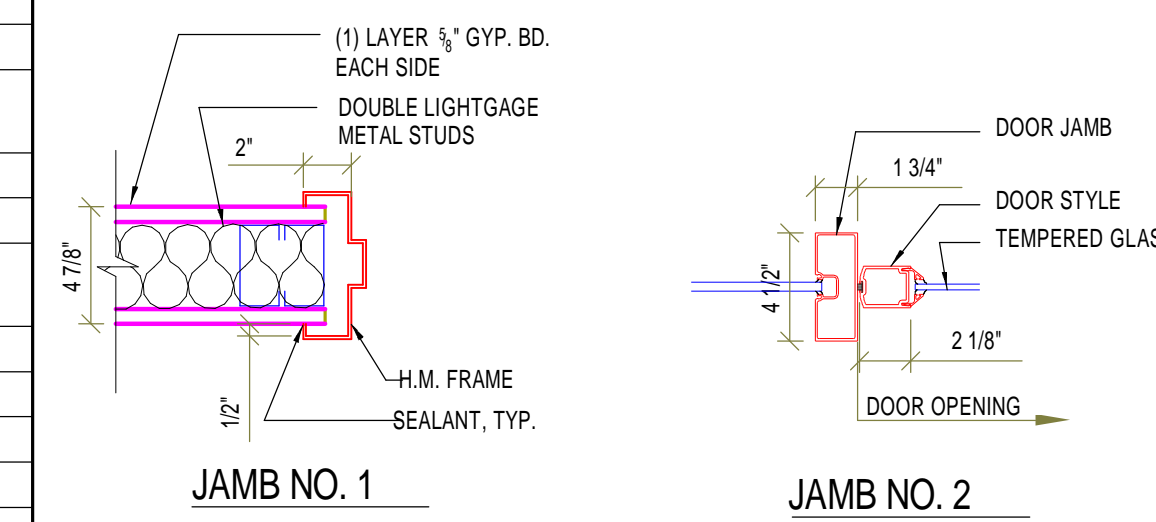
Bergmann
associates
architects // engineers // planners

28 East Main Street
200 First Federal Plaza
Rochester, New York 14614 - 1909
office: 585.232.5135
fax: 585.232.4625

www.bergmannpc.com

DOOR SCHEDULE														
NUMBER	ROOM NAME	HAND	DOOR OPENING	DOOR TYPE (1)	CONSTRUCTION (2)	FINISH (3)	FIRE RATING (4)	FRAME MATL (5)	FRAME FINISH	FRAME ELEV (6)	HEAD (7)	JAMB (8)	HARDWARE (10)	COMMENTS (11)
5000-1	RECEPTION	RHR	36"X84"	B	AL		-	-	MFR	B	2	2	1	ELECTRONIC RELEASE BY RECEPTIONIST
5000-2	RESTROOM	LH	36"X84"	A	IHM	P3	-	HM	P1	A	1	1	2	
5000-3	RECEPTION	RHR	36"X84"	A		P1	-		P1	A	1	1	3	1 RELOCATED DOOR/ FRAME 1,3
5002-1	CONFERENCE ROOM	LH	36"X84"	-	-	P1	-	HM	P1	-	1	1	ETR	
5008-1	OFFICE	LH	36"X84"	ETR	-	P3	-	-	P1	-	1	1	ETR	1,3
5010-1	OFFICE	RH	36"X84"	ETR	-	P3	-	-	P1	-	-	-	ETR	1,3
5012-1	OFFICE	RH	36"X84"	ETR	-	P3	-	-	P1	-	-	-	ETR	1,3
5016-1	OFFICE	RH	36"X84"	ETR	-	P3	-	-	P1	-	-	-	ETR	1,3
5020-1	OFFICE	RH	36"X84"	ETR	-	P3	-	-	P1	-	-	-	ETR	1,3
5024-1	OFFICE	RH	36"X84"	ETR	-	P3	-	-	P1	-	-	-	ETR	1,2,3
5035-1	OFFICE	LH	36"X84"	REL	-	P3	-	-	P1	-	-	-	ETR	1,2,3
5039-1	OFFICE	RH	36"X84"	REL	-	P3	-	-	P1	-	-	-	ETR	1,2,3
5041-1	OFFICE	LH	36"X84"	REL	-	P3	-	-	P1	-	-	-	ETR	1,3
5042-1	COPY	-	48"X84"	-	-	-	-	HM	P1	A	1	1	-	TRIMMED OPENING
5043-1	OFFICE	RH	36"X84"	ETR	-	P3	-	-	P1	-	-	-	ETR	1,2,3
5045-1	OFFICE	LH	36"X84"	REL	-	P3	-	-	P1	-	-	-	ETR	1,2,3
5046-1	RECEPTION	RH	36"X84"	A	IHM	P1	-	HM	P1	A	1	1	3	
5047-1	OFFICE	RH	36"X84"	REL	-	P3	-	-	P1	-	-	-	ETR	1,2,3
5048-1	PASSENGER ELEVATOR	N/A	-	-	HM	P1	-	ETR	P1	ETR	ETR	ETR	ETR	
5049-1	OFFICE	RH	36"X84"	ETR	-	P3	-	-	P1	-	-	-	ETR	ADD PROVISION FOR ELECTRIC STRIKE FOR ADA PADS EXISTING TO REMAIN
5050-1	DATA CLOSET	RH	-	ETR	HM	P1	-	ETR	P1	ETR	ETR	ETR	ETR	
5051-2	PASSENGER ELEVATOR	N/A	-	ETR	HM	P1	ETR	ETR	P1	ETR	ETR	ETR	ETR	
5961-1	EXISTING STAIR A	LH	-	ETR	-	P1	-	-	P1	-	-	-	ETR	1,3
5962-1	EXISTING STAIR B	RH	-	ETR	-	P1	-	-	P1	-	-	-	ETR	1,3

8. JAMB DETAILS



10. HARDWARE SETS

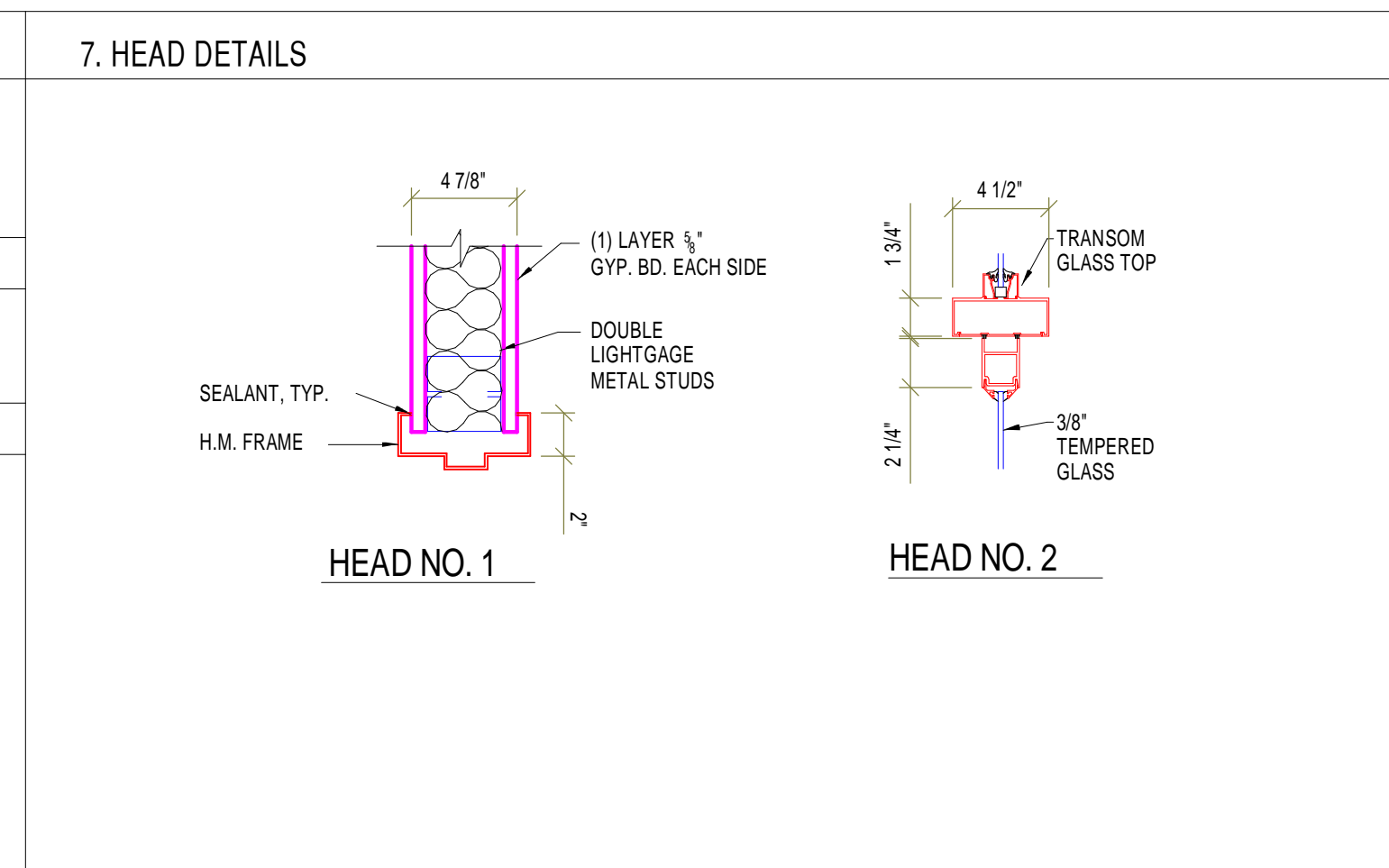
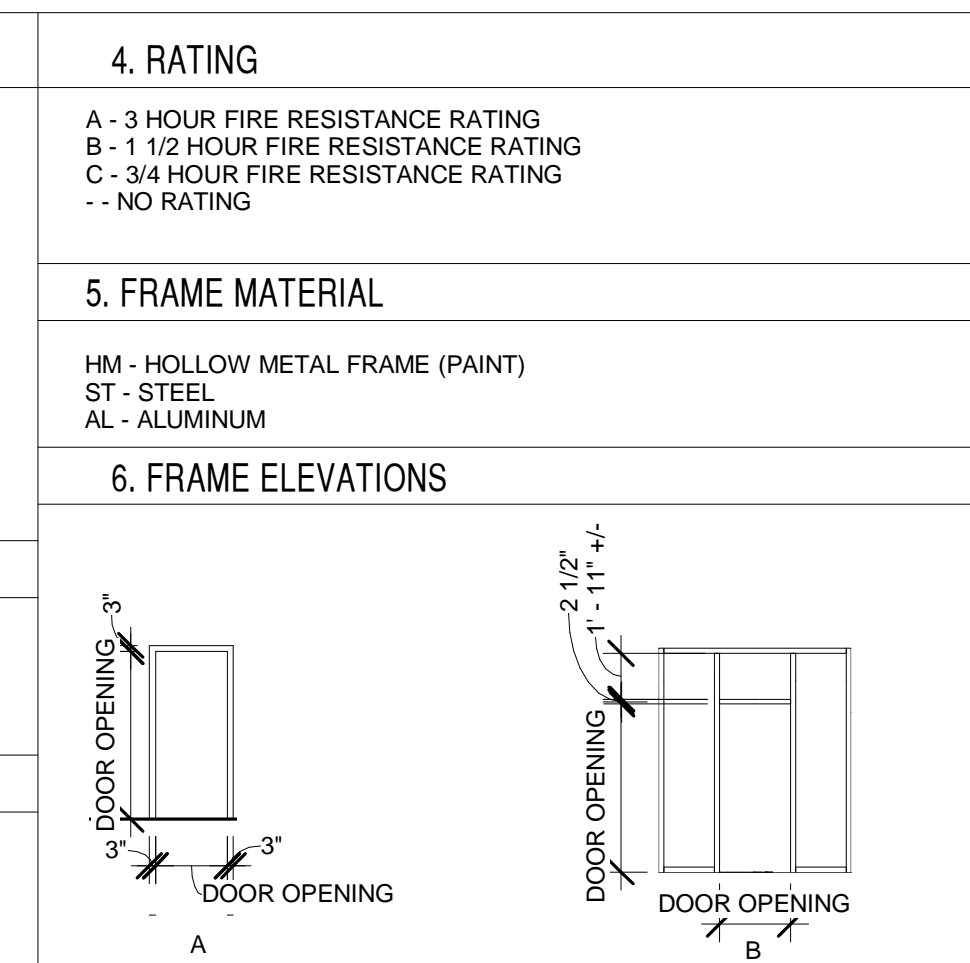
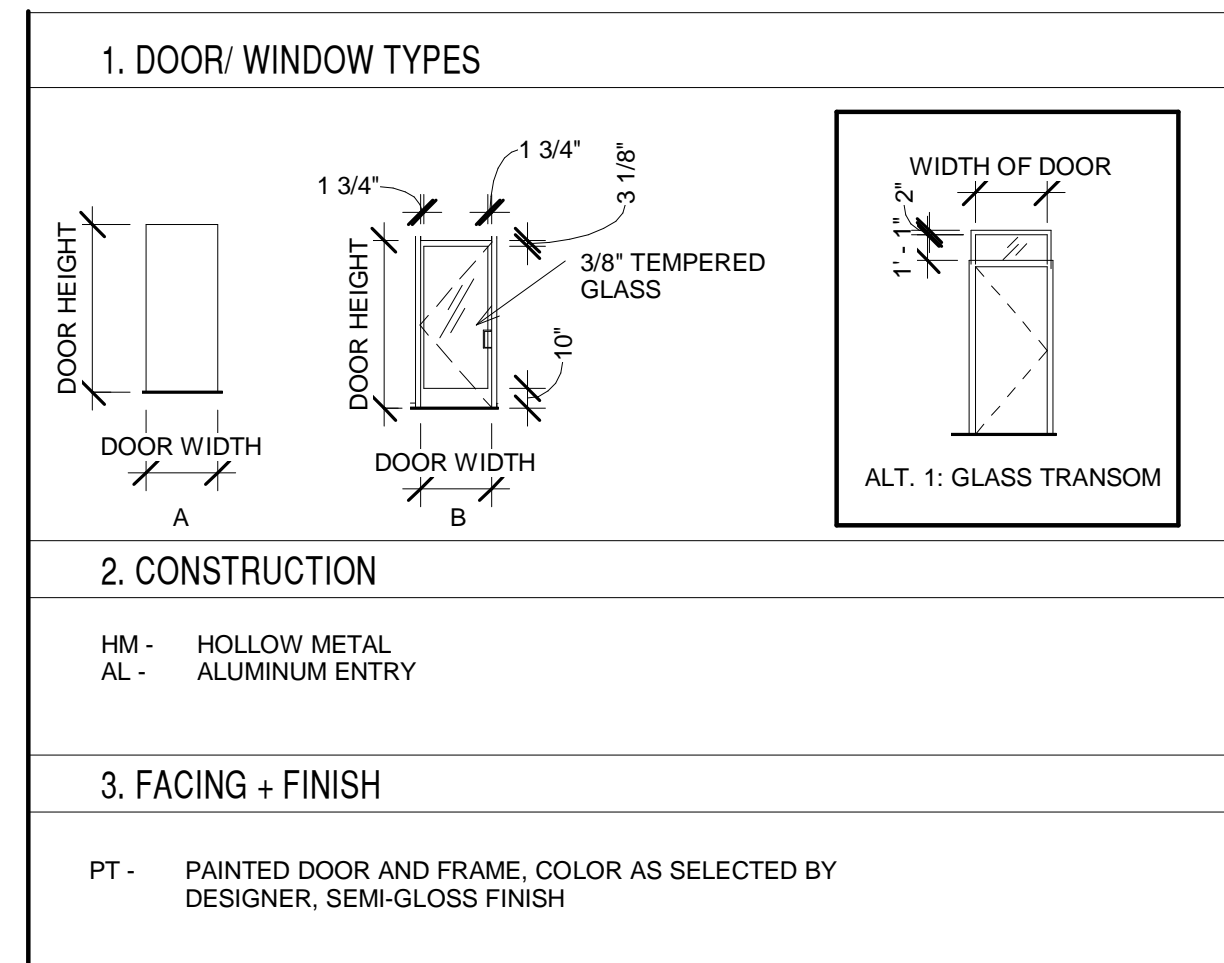
- SET #1**
- LOCKSET (ENTRY)
- 2 PULLS
- (3) HINGES
- 1 CLOSER (95% HOLD OPEN)
- ELECTRIC STRIKE
- 3 SILENCERS
- SET #2**
- LOCKSET (PRIVACY)
- (3) HINGES
- 3 SILENCERS
- 1 FLOOR STOP
- SET #3**
- LOCKSET CLASSROOM
- (3) HINGES
- 1 CLOSER
- 3 SILENCERS
- NOTE:**
ALL NEW HARDWARE TO MATCH EXISTING IN TYPE AND FINISH

HARDWARE NOTES:

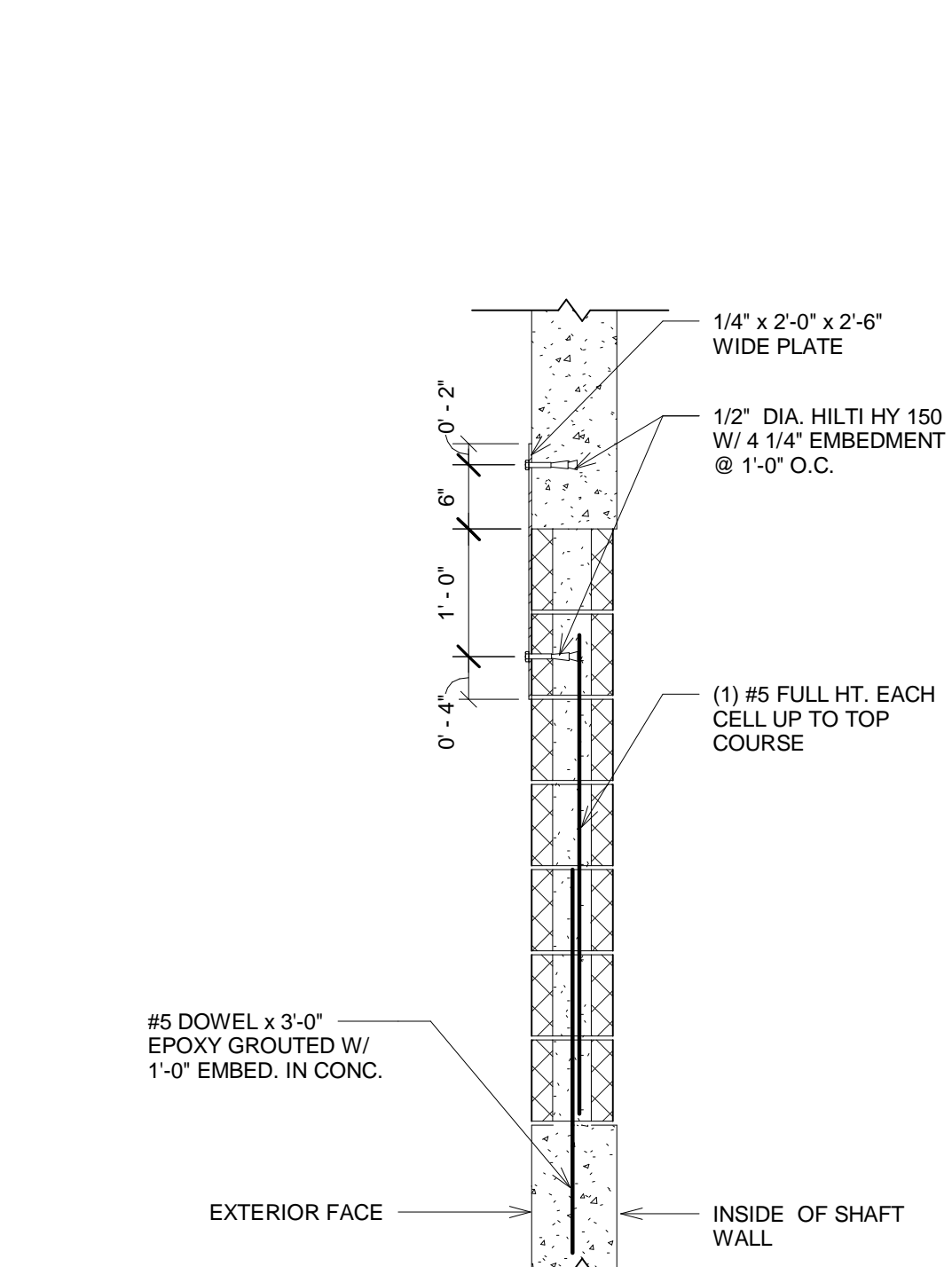
- SEE SPECIFICATION FOR COMPLETE DOOR HARDWARE REQUIREMENT.
- HARDWARE ABBREVIATIONS:
PR - PRIVACY LOCKSET
EDN - EXIT DEVICE - VERTICAL ROD
EDR - EXIT DEVICE - RIM TYPE
SR - STOREROOM LOCKSET
OF - OFFICE LOCKSET
PS - PASSAGE SET
PP - PUSH/PULL
- ALL RATED DOORS TO BE PROVIDED WITH CLOSERS.

11. REMARKS

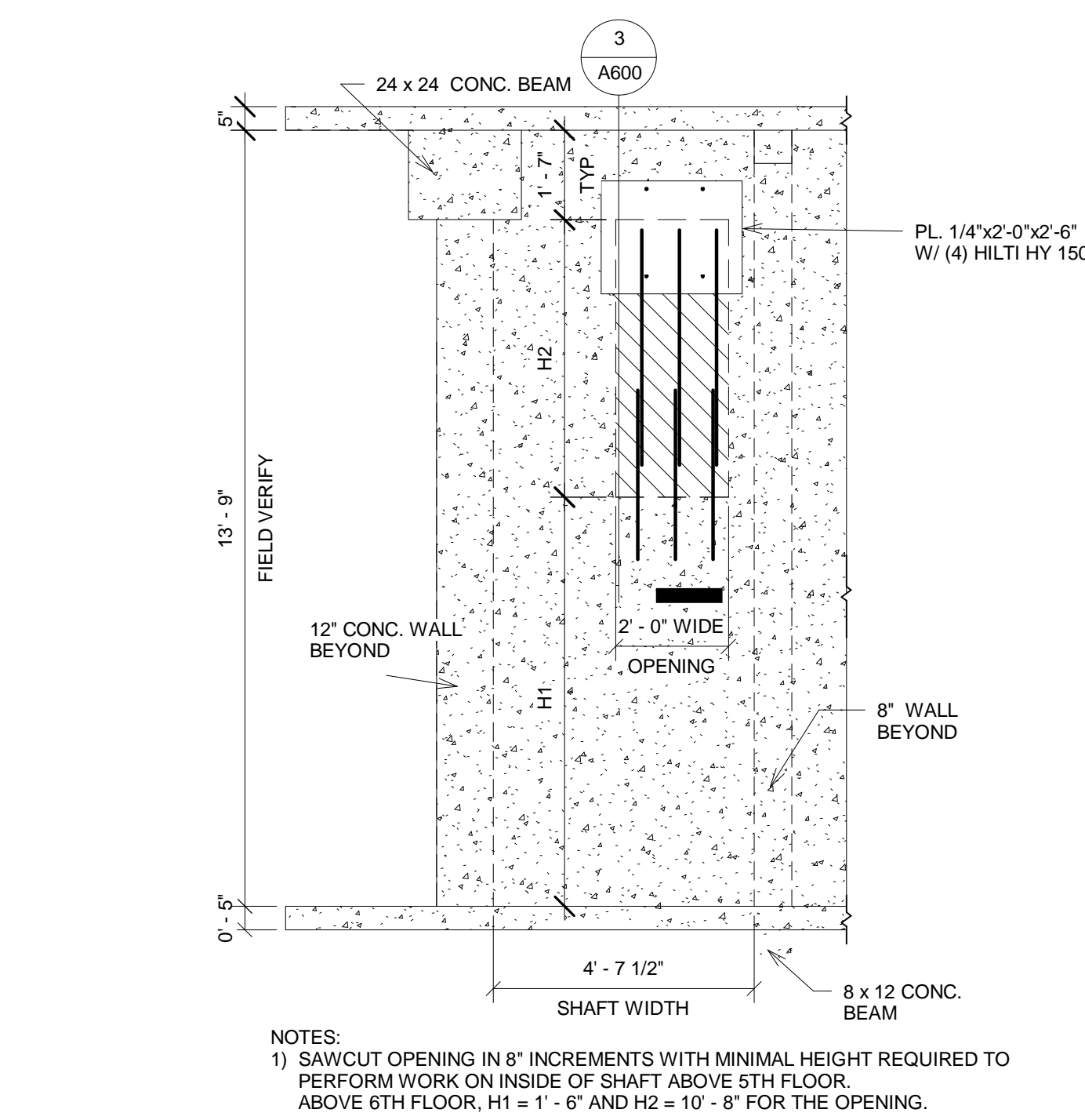
- VERIFY EXISTING DOOR OPENING SIZE IN THE FIELD
- VERIFY EXISTING THROAT SIZE OF EXISTING WALL CONSTRUCTION FOR DOOR FRAME.
- DOOR AND FRAME EXISTING TO REMAIN, PAINT IN FIELD



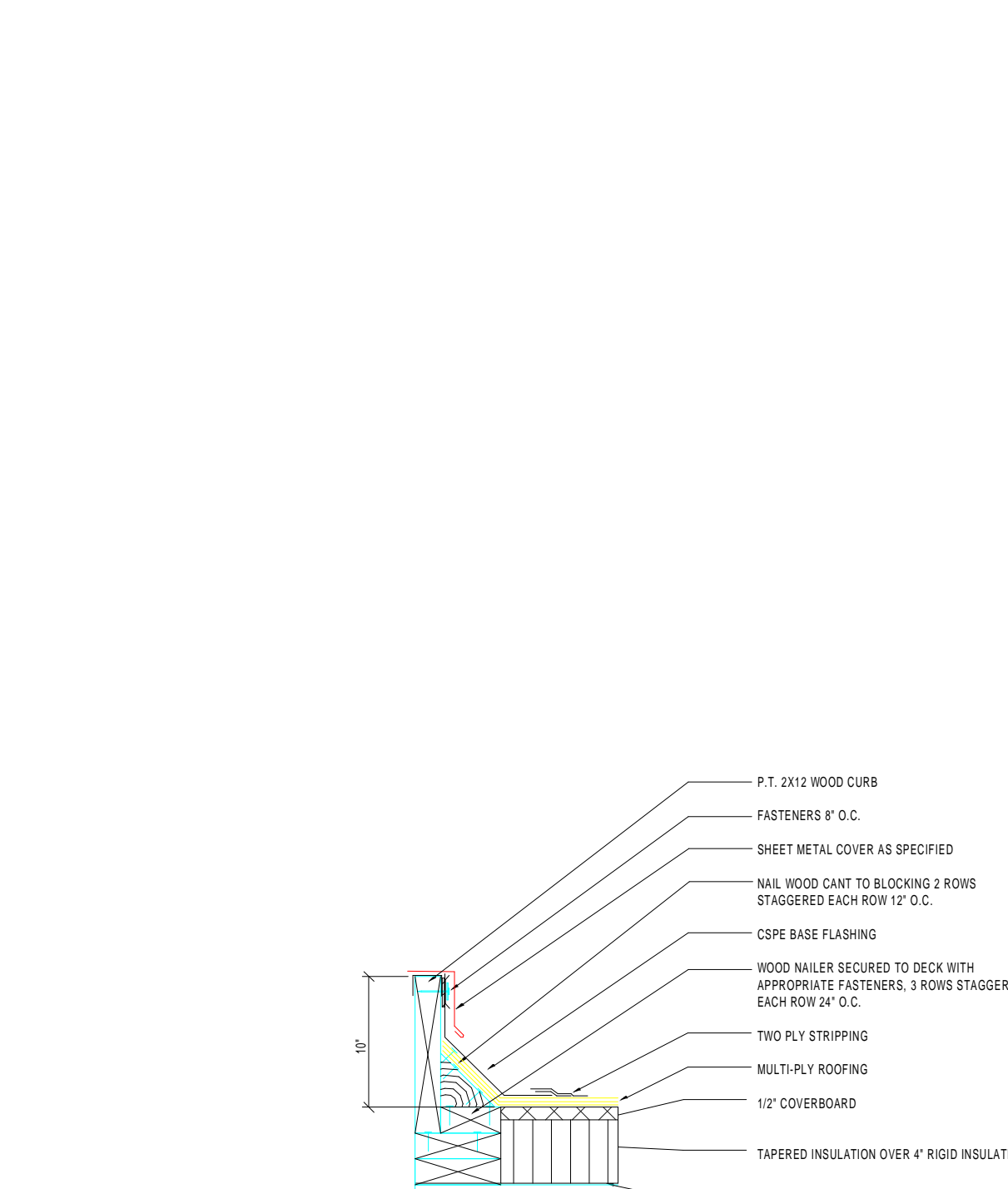
- GENERAL DOOR NOTES:**
- ALL DOORS ARE 1 3/4" THICK X 7'-0" HEIGHT UNLESS NOTED OTHERWISE
 - ALL GLAZING TO BE 3/8" THICK SAFETY GLASS UNLESS NOTED OTHERWISE
 - ALL GLASS AT OR BELOW 36" AFF OR WITHIN 18" OF FINISH FLOOR OR GRADE SHALL BE TEMPERED.
 - PROVIDE TYPICAL FLOOR TRANSITION TO SUIT PROJECT CONDITION.
 - WHERE EXISTING FRAMES ARE TO BE REUSED, PREPARE FRAMES AFTER DEM/REQUIRED FOR REINSTALLATION. ANY ABANDONED HARDWARE ITEMS TO BE INFILLED METAL BOND FILLER, SANDED SMOOTH.



3 STRUCTURAL WALL INFILL SECTION
3/4" = 1'-0"



4 TEMPORARY OPENING DEMOLITION AND INFILL
3/8" = 1'-0"



5 HVAC ROOF CURB DETAIL
1" = 1'-0"

SCHEDULES

Note:
Unauthorized alteration or addition to this drawing is a violation of the New York State Education Law Article 145, Section 7209.

Project Manager: R. NAPOLI
Designed By: K. LABITA
Drawn By: K. LABITA
Checked By: T. CASTELEIN
Date Issued: 12/16/09
Scale: As indicated

Project Number:
8217.00

Drawing Number:

A600