

Department of Human Resources Office Renovation

RIT

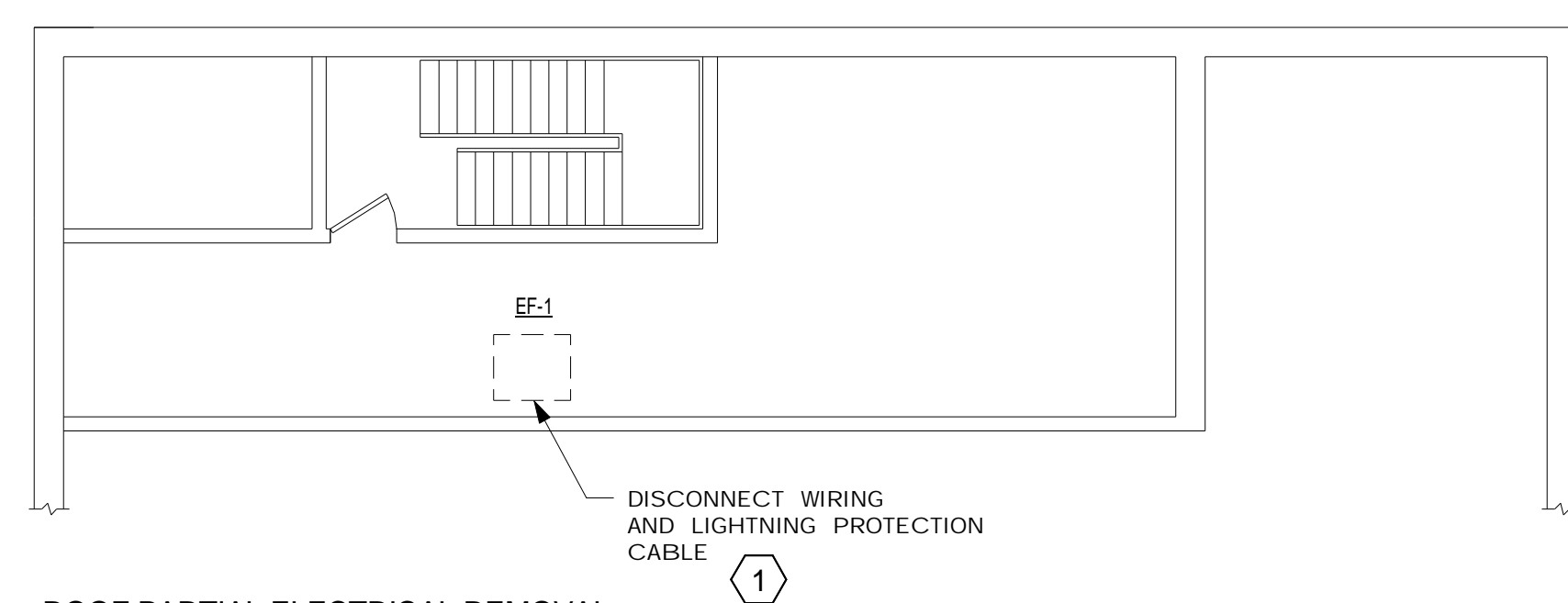
George Eastman Building
Fifth Floor
8 Lomb Memorial Dr.
Rochester, NY 14623

Bergmann
associates
architects // engineers // planners

28 East Main Street
200 First Federal Plaza
Rochester, New York 14614 - 1909

office: 585.232.5135
fax: 585.232.4625

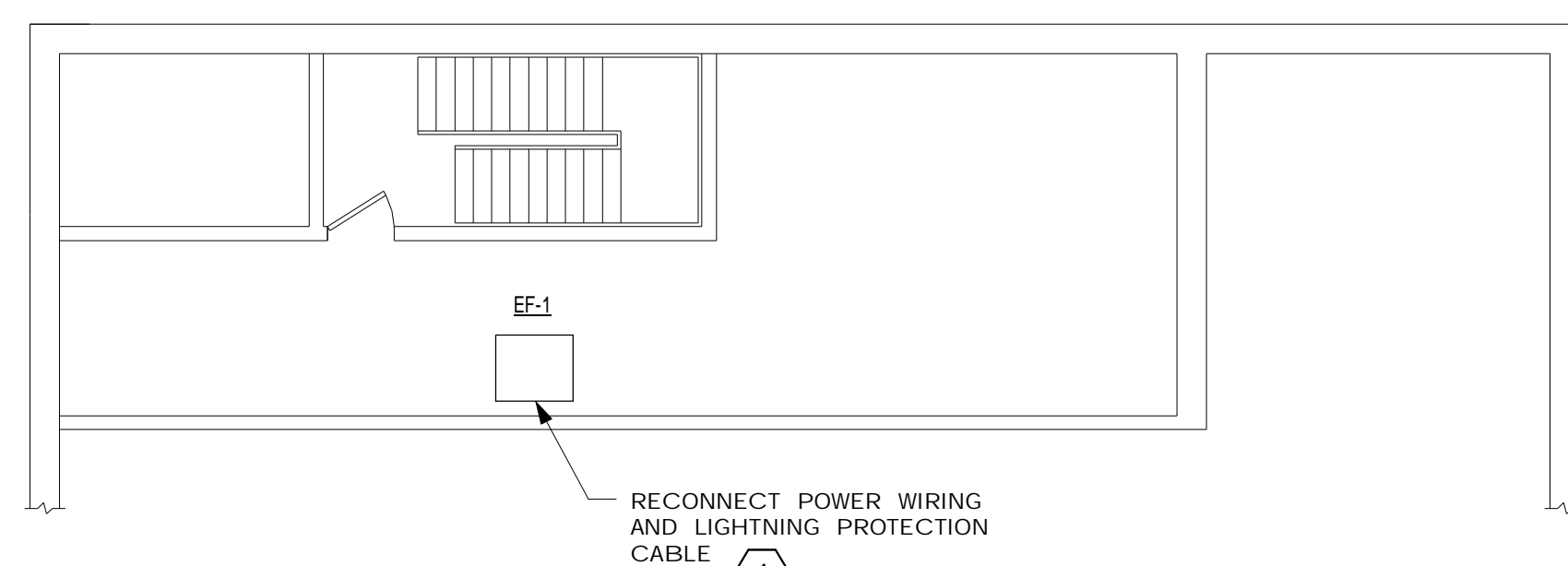
www.bergmannpc.com



① ROOF PARTIAL ELECTRICAL REMOVAL PLAN
1/8" = 1'-0"

ⓧ ELECTRICAL REMOVAL NOTES

1. DISCONNECT POWER WIRING AND LIGHTNING PROTECTION CABLE. SAVE WIRING FOR REUSE.



② ROOF PARTIAL ELECTRICAL INSTALLATION PLAN
1/8" = 1'-0"

ⓧ ELECTRICAL INSTALLATION NOTES

1. RECONNECT POWER WIRING. PROVIDE GROUNDING LUG ON MOTOR MOUNT FOR RECONNECTION OF LIGHTNING PROTECTION CABLE. CONNECT LINE VOLTAGE TO BACKDRAFT DAMPER LOCATED ON UNIT.

ROOF PARTIAL ELECTRICAL PLANS

Note:
Unauthorized alteration or addition to this drawing is a violation of the New York State Education Law Article 145, Section 7209.

Project Manager:

R. NAPOLI

Designed By:

B. ELIASZ

Drawn By:

B. ELIASZ

Checked By:

C. SMEENK

Date Issued:

12/4/09

Scale:

1/8" = 1'-0"

Project Number:
8217.00

File Name:

Drawing Number:

E-102