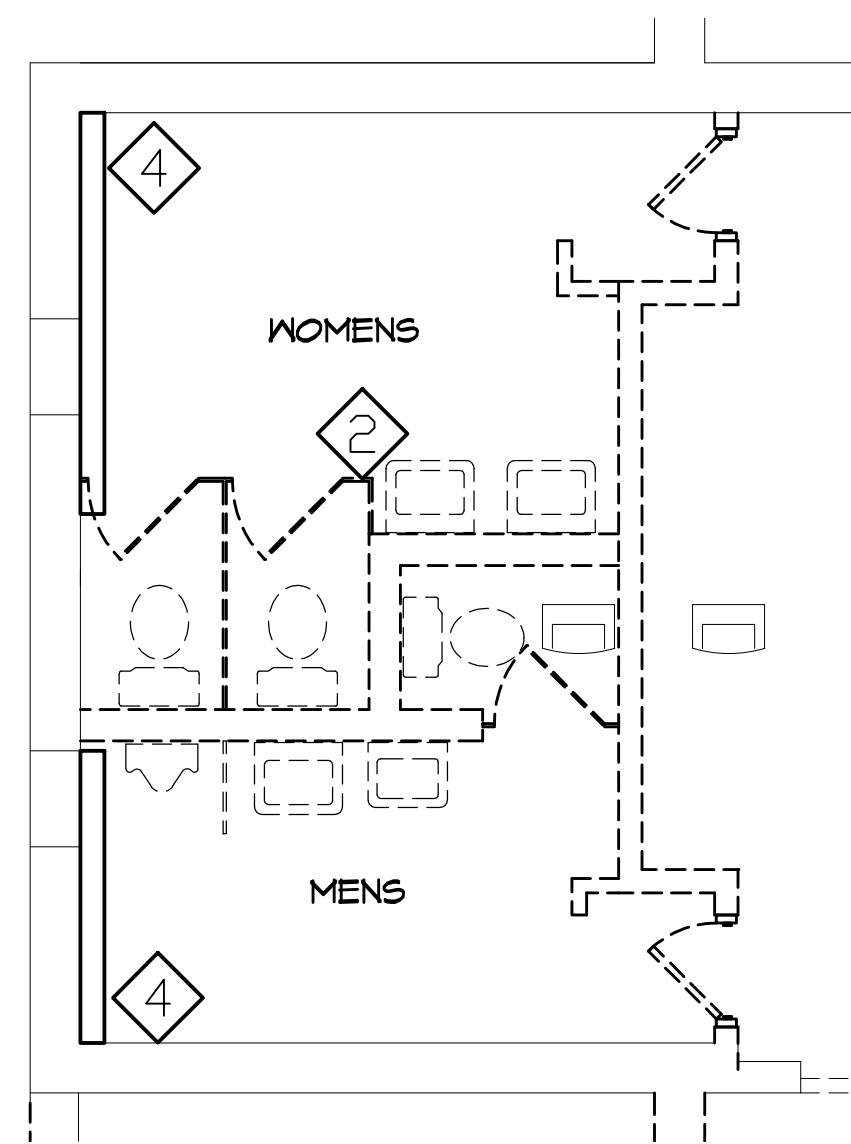


PARTIAL FLOOR PLAN - REMOVALS

1/4"=1'-0"

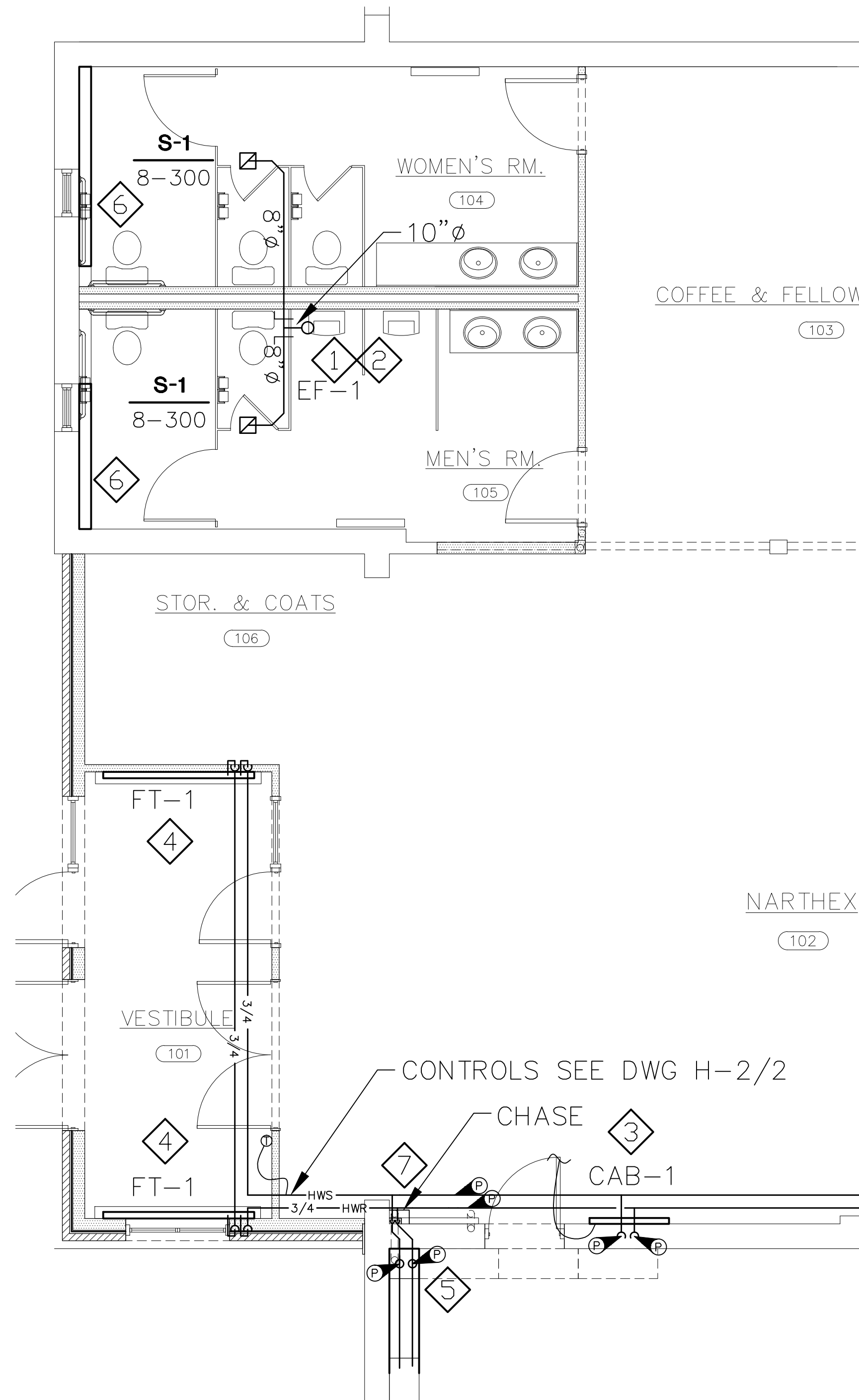


PARTIAL FLOOR PLAN - REMOVALS

1/4"=1'-0"

**REMOVAL KEYNOTES**

1. REMOVE CABINET HEATER & THERMOSTAT CONTROL LINE. RETAIN FOR RELOCATION. PATCH & PAINT WALL TO MATCH EXISTING WALL.
2. REMOVE EXISTING BATHROOM EXHAUST SYSTEM INCLUDING DIFFUSERS, DUCTWORK, EXHAUST FAN, CONTROL WIRING AND CAP.
3. REMOVE HWS & HWR PIPE AS SHOWN. PROVIDE CAPPING OR PLUGGING AND SEALING OF ALL PIPING THAT WILL NOT BE RE-USED.
4. REMOVE BASEBOARD RADIATION UNITS AND RETAIN FOR REUSE IN SAME LOCATIONS. CAP ALL OPEN PIPE CONNECTIONS WHILE UNITS ARE DISCONNECTED. REPAIR OR REPLACE MISSING OR DAMAGED COVERS AND END CAPS. AS AN ALTERNATE TO REMOVAL RETAIN AND PROTECT IN PLACE.



PARTIAL FLOOR PLAN - NEW WORK

1/4"=1'-0"

**KEYNOTES**

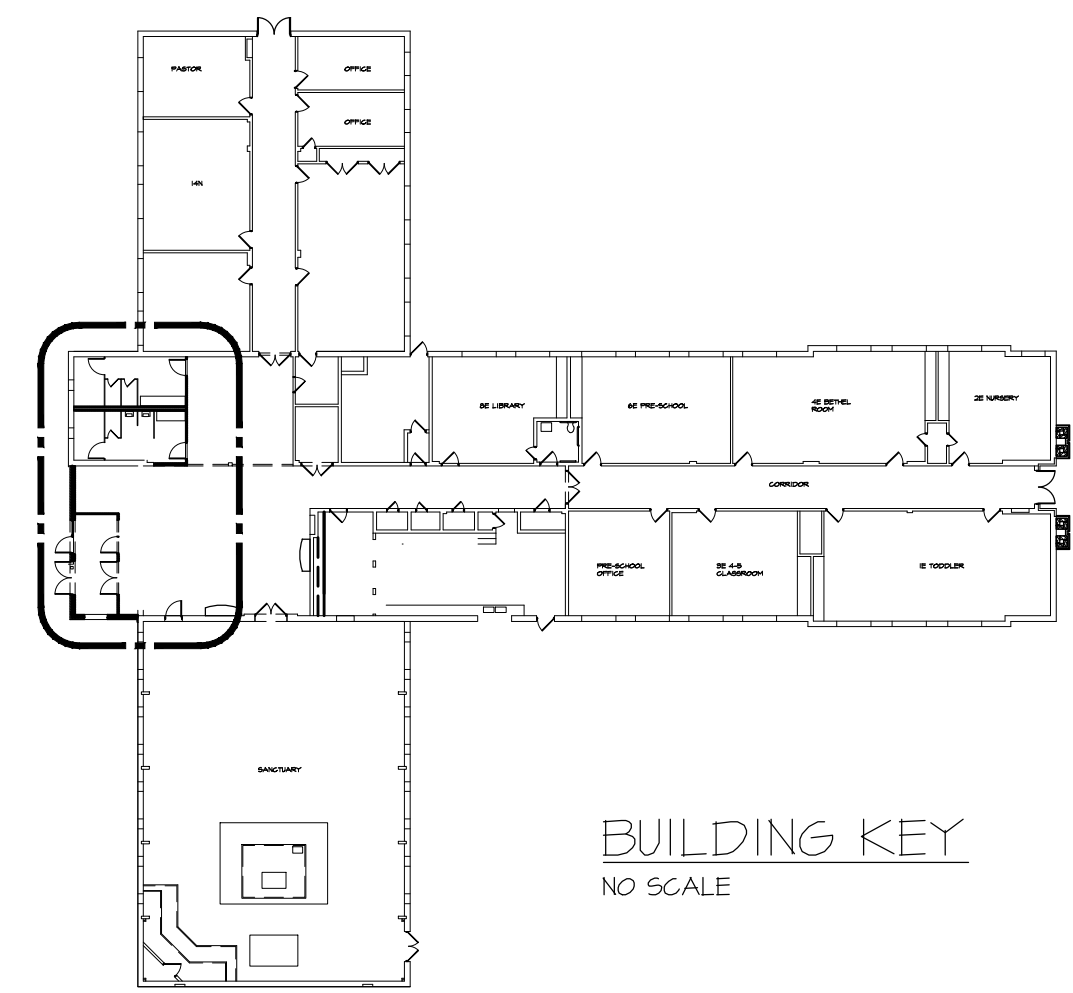
1. PROVIDE 525 CFM TOILET ROOM EXHAUST FAN INCLUDING DUCTWORK, BACKDRAFT DAMPER, ROOF CURB, FLASHING, CAP AND ALL OTHER MATERIALS FOR A COMPLETE EXHAUST FAN INSTALLATION.
2. BATHROOM EXHAUST FAN TO BE TIED INTO LIGHTING FOR MEN'S AND LADY'S ROOMS. SEE ELECTRICAL DRAWING E-3 FOR DETAILS.
3. CUT NEW ROUGH IN OPENING (XX"W BY XX"H BY XX"D) AND MOUNT HEATER IN WALL. CONNECT TO EXISTING PIPING AND THERMOSTAT. PROVIDE ALL MATERIALS FOR A COMPLETE CABINET HEATER INSTALLATION.
4. PROVIDE STERLING OR EQUIVALENT 5' ACTIVE LENGTH FINNED TUBE RADIATOR, END CAPS, CONTROLS, FITTINGS, VALVES AND ALL OTHER MATERIALS FOR A COMPLETE FINNED TUBE RADIATION INSTALLATION.
5. INSTALL HOSE BIB & CONTROL VALVE FROM REMOVED SECTION. CONNECT TO EXISTING PIPING AND THERMOSTAT. PROVIDE ALL MATERIALS FOR A COMPLETE CABINET HEATER INSTALLATION.
6. INSTALL RETAINED BASEBOARD RADIATION UNITS. RECONNECT TO EXISTING PIPING AND THERMOSTAT. PROVIDE ALL MATERIALS FOR A COMPLETE BASEBOARD RADIATION UNIT INSTALLATION.
7. HWS & HWR LINES TO RUN IN NARTHEX CHASE TO RECONNECT EXISTING FINNED TUBE HEATERS IN SANCTUARY.

**HVAC LEGEND**

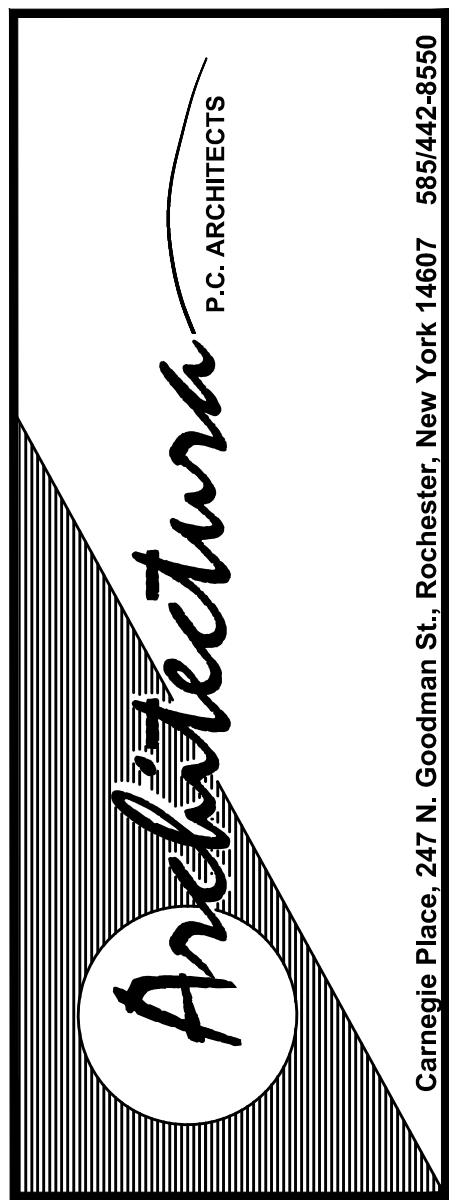
SYMBOL	ABBREV	ITEM
	FTR	FINNED TUBE RADIATION
		PIPING TEE - UP
		PIPING TEE - DOWN
		PIPING TEE
		PIPING ELBDW - UP
		PIPING ELBDW DOWN
		PIPING ELBDW
	GV	GATE VALVE
	BV	BALL VALVE
	D-1	TYPE DIFFUSER DESIGNATION
	8-200	CFM NECK SIZE
	14 x 10	RIGID DUCT DUCT SIZE
		ADJACENT SIDE VISABLE SIDE
		CEILING GRILLE - RETURN
	EF	EXHAUST FAN
	T-STAT	THERMOSTAT
	BD	BALANCING DAMPER (QUADRANT TYPE)
	HWS	HOT WATER SUPPLY
	HWR	HOT WATER RETURN
		POINT OF CONNECTION TO EXISTING PIPING
		POINT OF DISCONNECTION FROM EXISTING PIPING
		INDICATES ITEMS TO BE REMOVED

**HVAC GENERAL NOTES**

- A. DO NOT BASE ROUGH-IN DIMENSIONS ON INFORMATION SHOWN ON THESE DRAWINGS. ROUGH-IN DIMENSIONS SHALL BE BASED ON ARCHITECTURAL INTERIORS PLANS, AND DIMENSIONED MILLWORK AND FIXTURE CATALOG CUTS.
- B. INSTALL ALL EQUIPMENT IN STRICT CONFORMANCE WITH MANUFACTURER'S INSTRUCTIONS AND RECOMMENDATIONS.
- C. IT IS THE RESPONSIBILITY OF THE CONTRACTOR TO COORDINATE THE WORK OF THIS CONTRACT WITH THE WORK OF ALL OTHER TRADES PRIOR TO THE FABRICATION OR INSTALLATION OF ANY WORK.
- D. THE DRAWINGS ARE SCHEMATIC IN NATURE. THE CONTRACTOR SHALL PROVIDE ALL OFFSETS, FITTINGS, HANGERS, ANCHORS, SUPPORTS, WIRING, AND ACCESSORIES NECESSARY FOR A COMPLETE AND OPERATIONAL INSTALLATION.
- E. ALL HYDRONIC HWS PIPE TO BE INSULATED WITH 2" FIBERGLASS INSULATION PER SPECIFICATIONS.



BUILDING KEY  
NO SCALE



THESE DRAWINGS ARE PROTECTED UNDER FEDERAL COPYRIGHT & STATE LAW. NO COPYING OR REPRODUCTION OR ALTERATIONS, NO UNAUTHORIZED USE WITHOUT THE APPROVAL OF ARCHITECTURA P.C.



ADDITIONS & RENOVATIONS  
FOR:  
PENFIELD UNITED METHODIST CHURCH  
1745 BAIRD ROAD  
PENFIELD, NEW YORK 145264

PROJECT NO.: 165102  
CHECKED BY: MSQ  
DRAWN BY: SJK  
DATE: 09-25-2009

REVISIONS:  
△

SHEET NAME  
HVAC PLANS

SHEET NO.  
H-1

Carnegie Place, 247 N. Goodman St., Rochester, New York 14607 585/442-8550